



# Corporate Services Scrutiny Panel

## Public Call for Evidence

### Government Plan



## Proposed Government Plan 2020-23



We are gathering evidence for our review of the [Government Plan](#). We are inviting members of the public, local businesses and other stakeholders to send us your views on the Government of Jersey's spending plans.

Your comments can cover any part of the Government Plan, or you may wish to answer the following questions:

## Government Spending



The Government Plan shows the actions and new projects that the Government is planning in 2020.

Will these actions and projects help the Government to meet its [five strategic priorities](#) of **Putting Children First**, **Improving Wellbeing**, **Creating a Vibrant Economy**, **Reducing Inequality** and **Protecting the Environment**?

[See Part 2 of the Government Plan for more detail on the Government's planned actions](#)

[See Government report on planned projects for 2020-2023 \(R.91/2019\).](#)

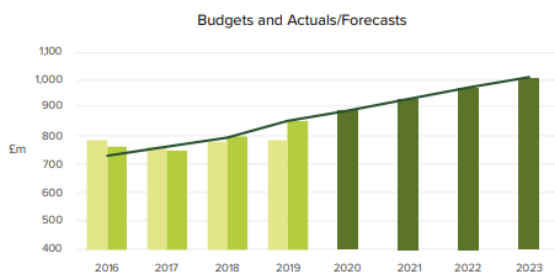
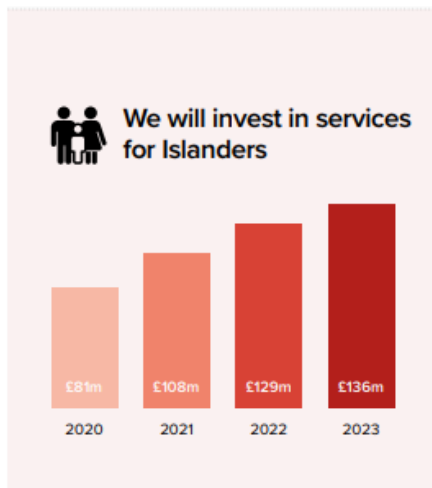


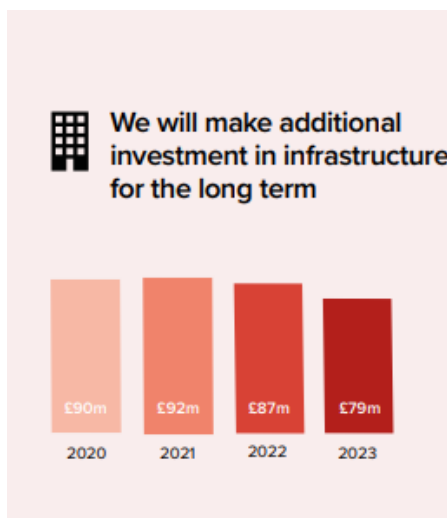
Figure 6 – Income and expenditure trends

The [Government's budget for this year is £735 million](#). In 2020, this will increase to £824 million, and by 2023 it will be £924 million. What are your views on this?

[See Part 3 of Government Plan for more detail on the Government's spending plans](#)



The Government is planning to spend [£81 million](#) on [new projects](#) in 2020. What are your views on this?



The Government plans to spend [£90 million](#) on [major infrastructure projects in 2020](#), such as refurbishing/extending schools, sewage treatments works, new IT systems, etc. This compares to £33 million due to be spent in 2019. What are your views on this?

Activity	Value (millions)
Bringing key back-office support services together to streamline processes and reduce duplication	£0.3
Reviewing the contracts that the Government has with its suppliers, to make savings through smarter purchasing, by achieving economies of scale, and through tougher negotiation on price	£3.0
Identifying options for the more efficient collection of taxes income, and reducing non-compliance among taxpayers	£7.0
Identifying options for the better establishment of charges, subsidies and cost allocation	£1.2
Delivering the first phase transformation of services within departments, achieving efficiency savings through more cost-effective structures, integration of services, and driving improvements in productivity.	£8.2
<b>Total identified to date</b>	<b>£19.7</b>

Table 1 – The value of efficiencies identified to June 2019

The [Government is planning to save £40 million in 2020](#) by finding ways to work more efficiently and effectively. What do you think about this?

## Tax Increases

**Fuel**  
Per litre



**+6p**

per litre increase in road fuel duty (4p goes into Climate Emergency Fund)

Petrol prices will increase by [6p per litre in 2020](#), of which [4p will go to a new Climate Emergency Fund](#).

Do you agree with this and how will it affect you?

[Read the Budget proposals in detail](#)

**Standard strength**



**+1p**

RPI increase

**Standard strength**



**+6p**

RPI + 1% increase

Alcohol taxes will [go up by 1p on a standard pint of beer and 6p on a standard bottle of wine](#) (in line with inflation).

Taxes on high strength alcohol will go up by more, for example 8p per pint on high strength beer and £2.08 on a litre of spirits.

What are your views on this, and do you agree with the [Government's strategy](#) of increasing tax to help reduce alcohol-related harm?



### GST

GST de-minimis threshold reduced from £240 to £135

The GST exemption for online shopping and bringing goods into the Island will [reduce from £240 to £135 from 1 July 2020](#). What do you think about this and how will it affect you?



### Long-Term Care

**1%**

1% increase in Long-term Care Fund contributions.

The Long Term Care charge will [increase from 1% to 2% from January 2020](#). The Government says that this is needed to make sure that the Long Term Care Fund has enough money in it for the next 25 years. Do you agree with this increase?

If you are an employer, or self-employed person, [the employer's social security rate will increase from 2% to 2.5%](#). How will this affect your business?

## Final Questions

---



### Proposed Government Plan 2020-23



Thinking about the Government Plan as a whole, does the Government do a good enough job of explaining how your taxes are being spent?

Have you been given enough information to understand what the Government is planning?

---

Which of the above areas do you think are particularly important, and why?



---

Are there any other issues that we should consider as part of our review?

---

Please contact us by -----:

**Online:** using our [feedback page](#)

**Social Media:** Jersey States Assembly Facebook, Twitter, LinkedIn and Instagram

**By email:** [scrutiny@gov.je](mailto:scrutiny@gov.je)

**By letter:** States Greffe: Scrutiny, Morier House, St. Helier, JE1 1DD

For further information, including the full Terms of Reference for this review, please visit [www.statesassembly.gov.je/scrutiny](http://www.statesassembly.gov.je/scrutiny) or contact us using the details above.

**Written submissions will usually be uploaded to the Scrutiny website, however, we reserve the right not to release certain submissions into the public domain. Any evidence received under a confidential or private agreement, in accordance with Jersey Data Protection legislation will not be released into the public domain. For further information please see the website or contact the Scrutiny Office.**